

# ROOMS

Make space within your space

LOFTWALL



Permits, general contractors, and drywall aren't the only way to create space.

Enter, Rooms: a modular masterpiece to unlock your space within a space. With limitless finish options, flexible design, and quality you only get when it's made in the USA, we think it's time we all get a Room.

# THE BREAKDOWN

## FINALLY, SOME ROOM TO DO YOUR BEST WORK

Rooms is jam-packed with function, no matter the type of space you need to create. It isn't one size fits all, it's your size, your way.

It's time to make some Room for the work that matters most.



### ACOUSTIC TACKABLE WALL PANELS



### DRY ERASE WALL PANELS



### LEVELING FEET



### REINFORCED CORNER POSTS



### SLIDING OVERHEAD DOOR WITH HANDLE



### 8' TALL WALLS

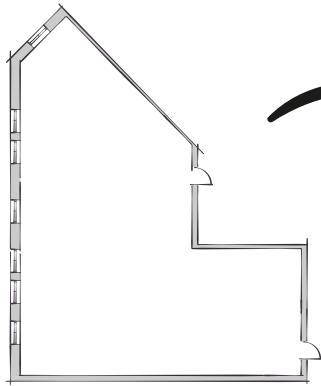


**LOFTWALL**

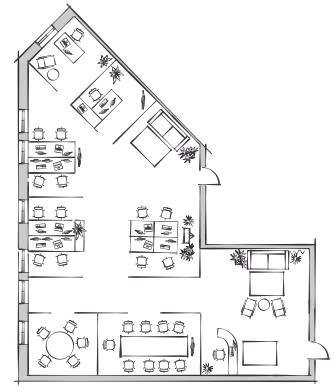
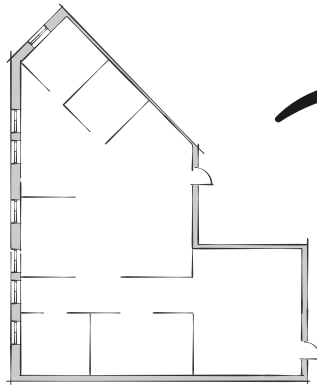
[www.loftwall.com/rooms](http://www.loftwall.com/rooms)

# THE PROCESS

We designed Rooms to work in any floorplan. With Rooms, you have an all-in-one system that divides your empty canvas into a move-in ready space.



FROM AN EMPTY CANVAS

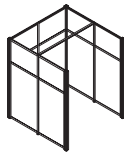


TO A MOVE-IN READY SPACE

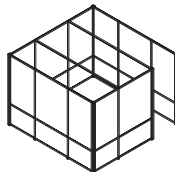
## 1 START WITH A TYPICAL



SHAPES

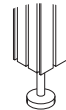


INDIVIDUAL PODS

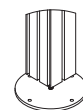


GROUP SPACES

## 2 PICK A MOUNTING STYLE



FREESTANDING



FLOOR MOUNTED

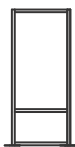


WALL MOUNTED

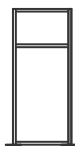
## 3 CHOOSE A WALL STYLE



STYLE 1



STYLE 2

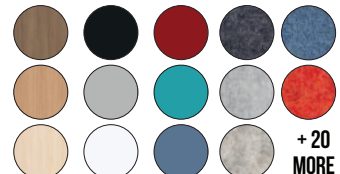


STYLE 3

## 4 ADD SOME COLOR!



FRAME FINISHES



PANEL FINISHES

+ 20  
MORE

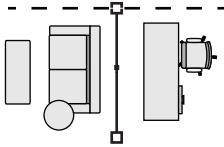
And our design team will be working  
with you every step of the way!



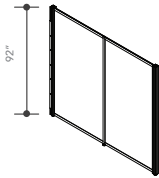
# SHAPES

Simple designs intended to get the ball rolling. Shapes can be combined and even grow overtime as your space's needs change.

## I



Designed to fit your space, I's can be created with any combination of walls.

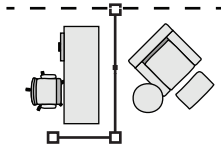


Shown with (2) 4' wide Room walls and a wall mount.

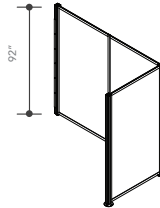
### TECH SPECS

- All I's must be wall mounted.
- Floor mounted I's can have a maximum run of 16' in length.
- Free standing I's can have a maximum run of 8' in length.

## L



Designed to fit your space, L's can be created with any combination of walls.

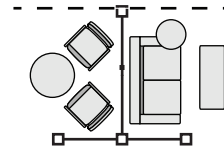


Shown with (3) 4' wide Room walls and a wall mount.

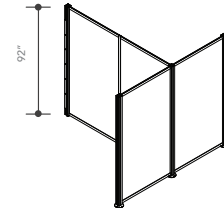
### TECH SPECS

- All L's must be wall mounted.
- Floor mounted L's can have a maximum run of 20' in length.
- Free standing L's can have a maximum run of 12' in length.

## T



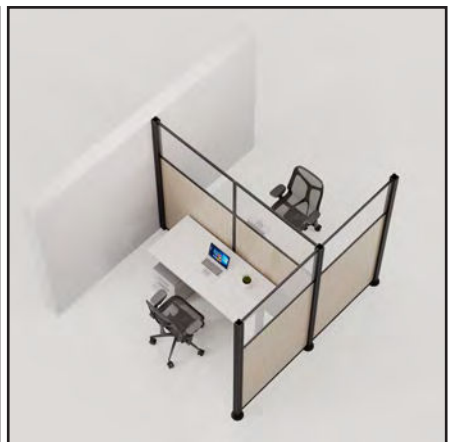
Designed to fit your space, T's can be created with any combination of walls.



Shown with (4) 4' wide Room wall and a wall mount..

### TECH SPECS

- All T's must be wall mounted.
- Floor mounted T's can have a maximum run of 20' in length.
- Free standing T's can have a maximum run of 12' in length.



### Shapes

Think of these designs as thought starters. When your design needs to be custom, we'll be ready.

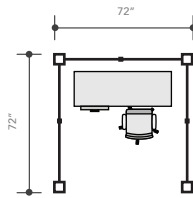
LOFTWALL

[www.loftwall.com/rooms](http://www.loftwall.com/rooms)

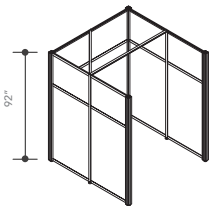
# POD TYPICALS

6' x 6' focus spaces designed to move you into a productive flow state. Perfect as dedicated workspaces or retreat relaxation zones. Available in all wall styles.

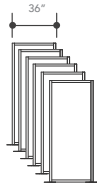
## 6' X 6'



Created using (6) 3' wide Room walls.



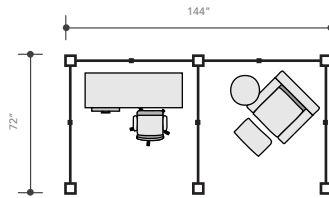
Shown with Style 3 walls. Available in all wall styles.



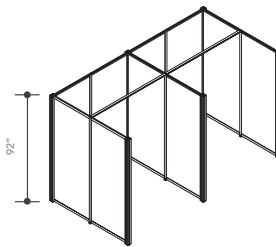
Priced as (6) 3' wide Room walls.



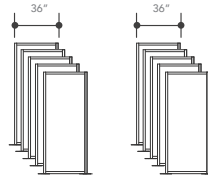
## 6' X 12'



Created using (10) 3' wide Room walls.

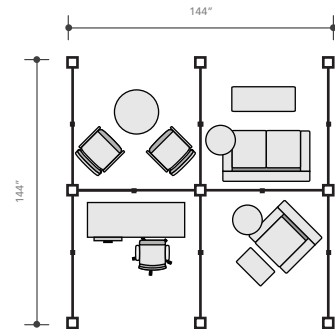


Shown with Style 1 walls. Available in all wall styles.

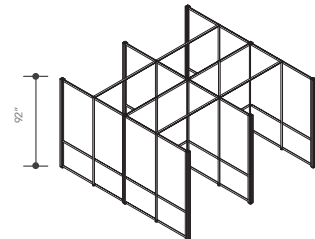


Priced as (10) 3' wide Room walls.

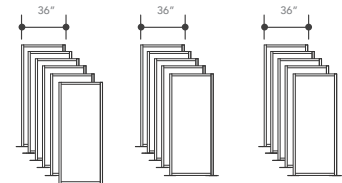
## 12' X 12'



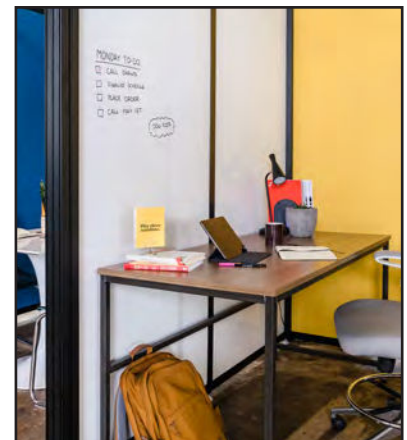
Created using (16) 3' wide Room walls.



Shown with Style 2 walls. Available in all wall styles.



Priced as (16) 3' wide Room walls.



### 6' x 18' Pods

Created using (14) 3' wide style 1 walls with Denim, Rustic Gold, Emerald Green, and Dry Erase panels.

LOFTWALL

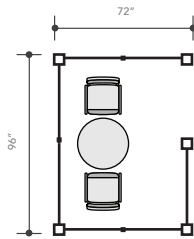
[www.loftwall.com/rooms](http://www.loftwall.com/rooms)



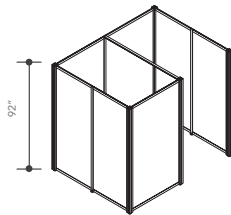
# SMALL GROUP TYPICALS

Small group touchdown spaces. Designed and stylized for maximum collaboration for groups of 2 - 6 people. Available in all wall styles.

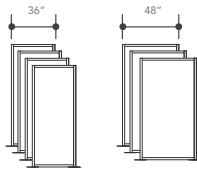
## 8' X 6'



Created using (4) 3' wide Room walls and (3) 4' wide Room walls.

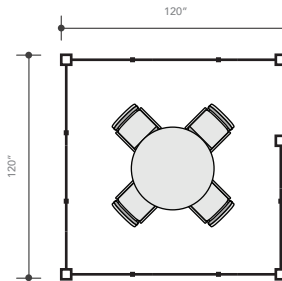


Shown with Style 1 walls. Available in all wall styles.

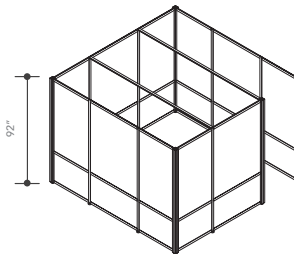


Priced as (4) 3' wide Room walls and (3) 4' wide Room walls.

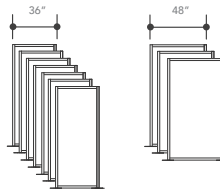
## 10' X 10'



Created using (7) 3' wide Room walls and (4) 4' wide Room Walls.

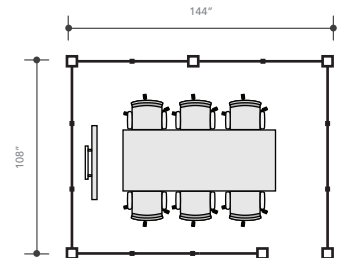


Shown with Style 2 walls. Available in all wall styles.

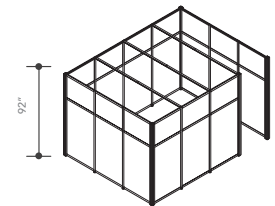


Priced as (7) 3' wide Room walls and (3) 4' wide Room walls.

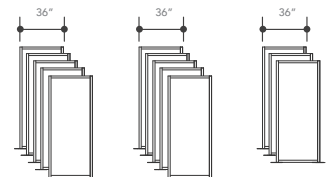
## 9' X 12'



Created using (13) 3' wide Room walls.



Shown with Style 3 walls. Available in all wall styles.



Created with and priced like (13) 3' wide Room walls.



### 9' x 12' Small Meeting Room

Created using (13) 3' wide style 3 walls with Oak and Frosted Acrylic panels.

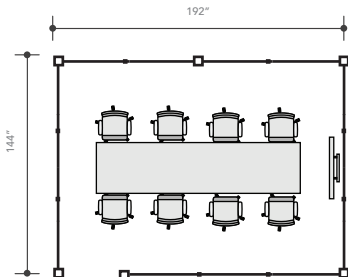
**LOFTWALL**

[www.loftwall.com/rooms](http://www.loftwall.com/rooms)

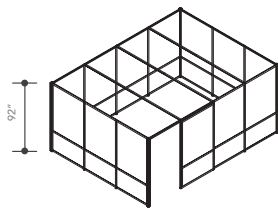
# LARGE GROUP TYPICALS

Large group meeting spaces. War rooms for your team to collaborate in real time. Designed for groups of 7 or more. Available in all wall styles.

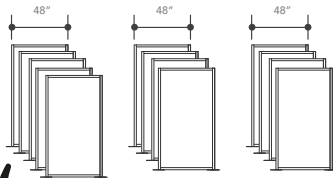
## 12' X 16'



Created using (13) 4' wide Room walls.

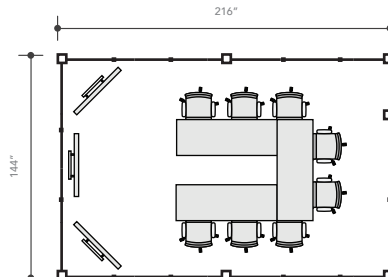


Shown with Style 3 walls. Available in all wall styles.

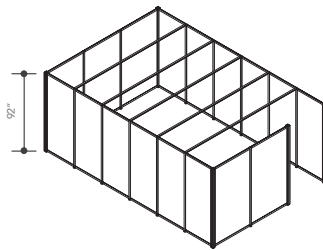


Priced as (13) 4' wide Room walls.

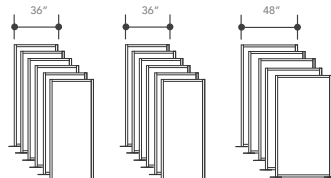
## 12' X 18'



Created using (12) 3' wide Room walls and (5) 4' wide Room Walls.

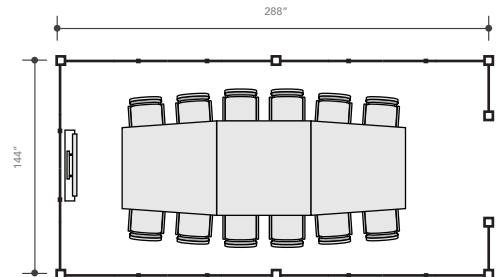


Shown with Style 1 walls. Available in all wall styles.

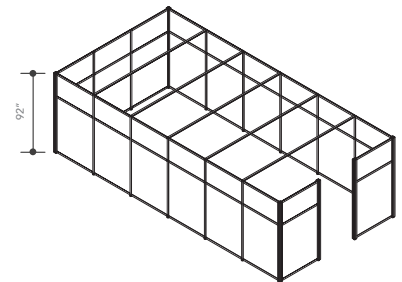


Priced as (7) 12 3' wide Room walls and (5) 4' wide Room Walls.

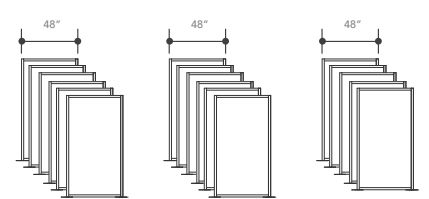
## 12' X 24'



Created using (17) 4' wide Room walls.



Shown with Style 2 walls. Available in all wall styles.



Created with and priced like (17) 4' wide Room walls.



### 12' x 16' Large Meeting Room

Created using (12) 3' wide style 2 walls with Charcoal PET, Dry Erase, Clear Acrylic, and Light Grey Blox.



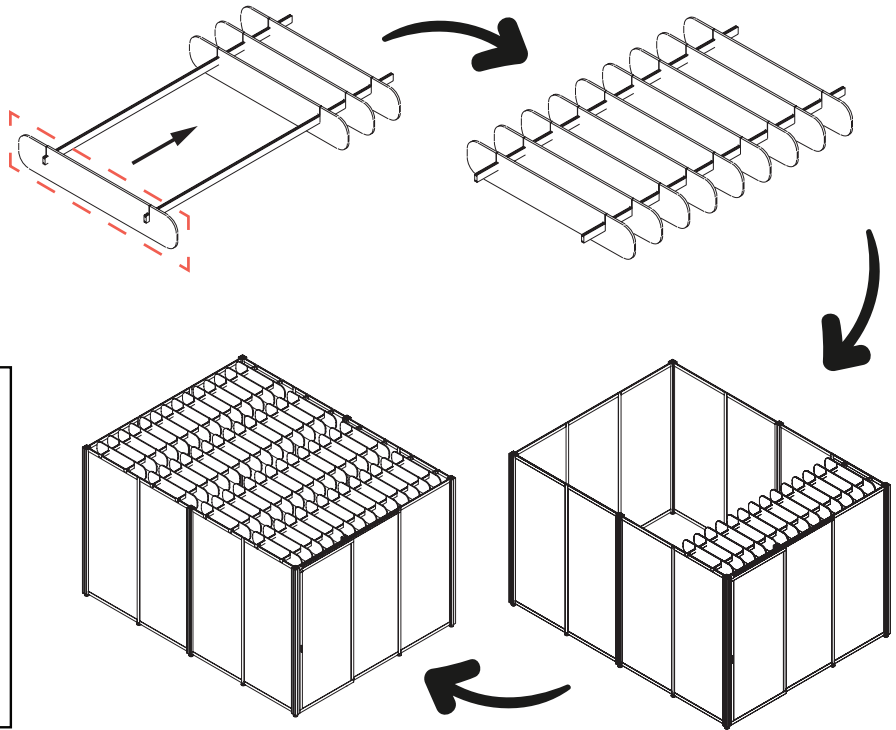
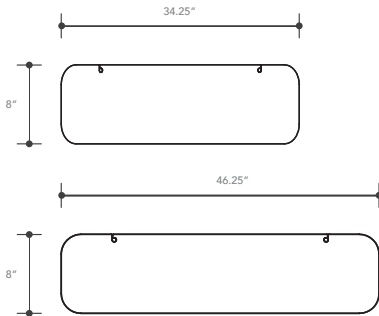
LOFTWALL

[www.loftwall.com/rooms](http://www.loftwall.com/rooms)

# THE BAFFLES

Where “shh” meets “wow”. Baffles are the best way to work the Room.

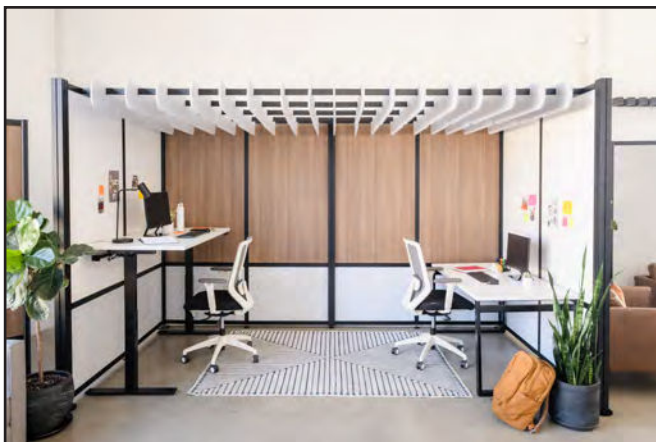
## ACOUSTIC CEILING BAFFLES



### CEILING BAFFLES:

Designed to complete any 3 or 4 sided Room, Baffles integrate natively into your Room's hardware. Panels are available in 2 widths and 12 finishes.

Interest in adding Baffles to your Room? Our design team would be happy to walk you through the process.



### 6' X 12' Work Room

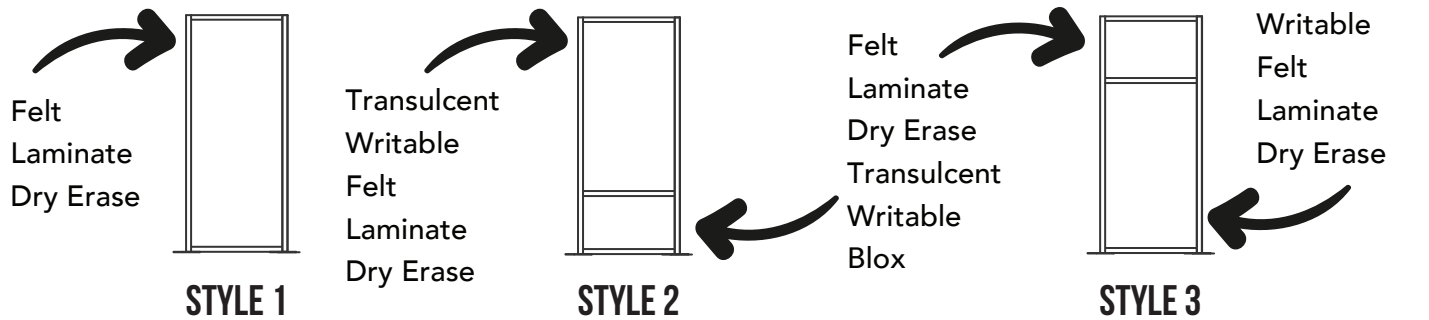
Created using (8) 3' wide style 2 walls with Marble PET, Dry Erase, Oak Laminate, and Marble Baffles.



# THE FINISHES

## PANEL FINISHES

The other guys have 3 panel finishes, we have 3 dozen. Enjoy.



### Felt Panels



### Translucent Panels

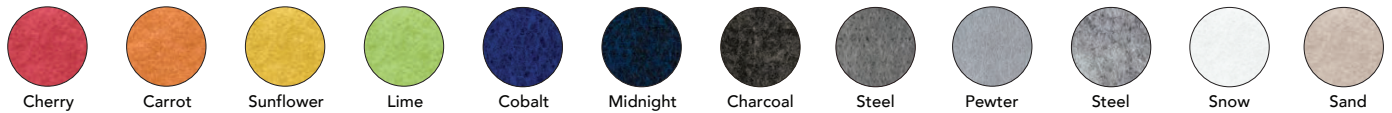


### Writable Panels

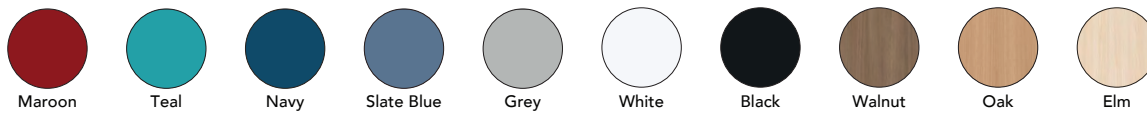


### Akustik Panels

\*Akustik is made of recycled PET material

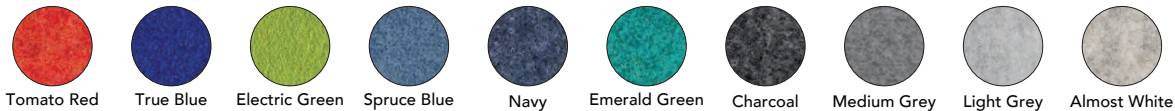


### Laminate Panels



### Blox Panels

\*Blox is made of premium, recycled wool blends \*\*Not available in 3' wide walls, 3' wide doors, or 4' wide doors



## BAFFLE FINISHES

Our acoustic ceiling baffles are made of recycled PET material



## FRAME FINISHES

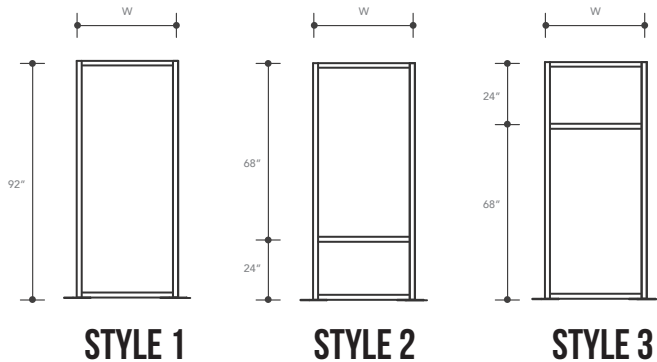
Manufactured from anodized aluminum.



# THE DETAILS

The fine print. What's behind the curtain.

## WALL STYLES

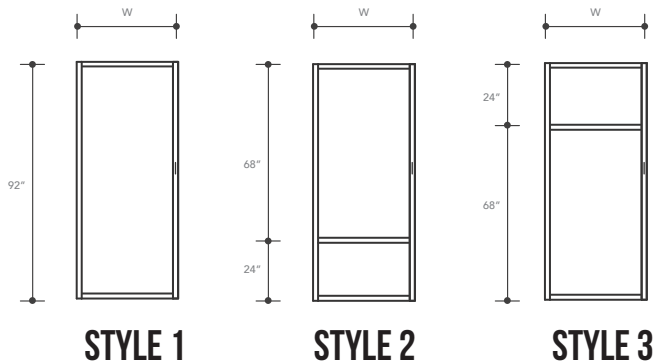


### AVAILABLE WALLS:

Available in 3 styles our Room walls were designed to give you the building blocks to craft any space.

Standard wall widths are 24", 36", and 48".

## DOOR STYLES



### AVAILABLE DOORS:

Available in 3 styles Room doors were created to be the finishing touch on your space.

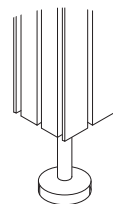
By integrating into an overhead track system, Doors have no floor hardware and no trip hazards.

To stay ADA compliant, standard doors are offered with 36" or 48" wide openings.

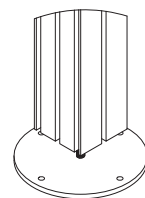
## MOUNTING STYLES

Because no floor is truly even, all Rooms were designed to have leveling feet. By rotating counterclockwise, Room feet can extend an 1.5".

Additionally, Room walls can be wall mounted. All I, L, and T shapes must be wall mounted. While Loftwall will provide the wall mounting kits, wall mounting is the responsibility of the purchasing install team.



**FREESTANDING**  
with leveling feet



**FLOOR MOUNTED**  
with leveling feet



**WALL MOUNTED**